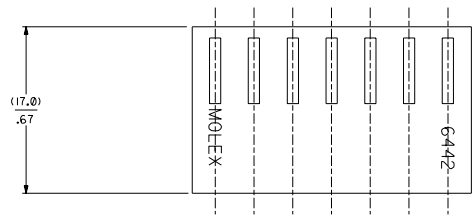


SECTION "C-C"



NO. OF CKT'S.	DIM. A	DIM. B
1	-----	(4.78+.18)
2	(3.96+.13)	.188+.007
	.156+.005	.344+.007
3	(7.92+.13)	(8.74+.18)
	.312+.005	.500+.007
4	(11.89+.13)	(12.70+.18)
	.468+.005	.656+.007
5	(15.85+.13)	(16.66+.18)
	.624+.005	.812+.007
6	(19.81+.13)	(20.62+.18)
	.780+.005	.968+.007
7	(23.77+.13)	(24.59+.18)
	.936+.005	1.124+.007
8	(27.74+.25)	(28.55+.18)
	1.092+.010	1.280+.012
9	(31.70+.25)	(32.51+.30)
	1.248+.010	1.436+.012
10	(35.66+.25)	(36.47+.30)
	1.404+.010	1.592+.012
11	(39.62+.25)	(40.44+.30)
	1.560+.010	1.748+.012
12	(43.59+.25)	(44.40+.30)
	1.716+.010	1.904+.012
13	(47.55+.30)	(48.36+.30)
	1.872+.012	2.060+.014
14	(51.51+.36)	(52.32+.36)
	2.028+.014	2.216+.016
15	(55.47+.36)	(56.29+.41)
	2.184+.014	2.372+.016
16	(59.44+.36)	(60.25+.41)
	2.340+.014	2.528+.016
17	(63.40+.36)	(64.21+.41)
	2.496+.014	2.684+.016
18	(67.36+.36)	(68.17+.41)
	2.652+.014	2.840+.016
19	(71.32+.36)	(72.14+.41)
	2.808+.014	2.996+.016
20	(75.29+.46)	(76.10+.41)
	2.964+.018	3.152+.020
21	(79.25+.46)	(80.06+.51)
	3.120+.018	3.308+.020
22	(83.21+.46)	(84.02+.51)
	3.276+.018	3.464+.020
23	(87.17+.46)	(87.99+.51)
	3.432+.018	3.620+.020
24	(91.14+.46)	(91.95+.51)
	3.588+.018	3.776+.020

- NOTES :
- HOUSING SHOWN ABOVE IS STANDARD HOUSING WITH NO OPTIONS.
 - THIS HOUSING FOR USE WITH TERMINAL NO. 6438-*, (18-22 GA.) WITH (2.79/.110) MAX. INSULATION DIA. 6838-*, (18-24 GA.) WITH (2.79/.110) MAX. INSULATION DIA. 7258-*, (22-26 GA.) WITH (1.65/.065) MAX. INSULATION DIA.
 - CIRCUIT SIZE MOLDED ON 4 THRU 24 CIRCUIT HOUSINGS ONLY.
 - SEE SHEET 2 FOR OPTIONS.
 - THIS PART COMPLIES WITH PROD. SPEC. 40-02.
 - MATERIAL: SEE LEGEND FOR MATERIAL CODE.

6442- * N - * - * - *

HOUSING OPTIONS

CODE	HOOKS	SIDE HOOKS	RAMP
BLANK	NONE	NONE	NONE
A	NONE	YES	NONE
R	NONE	NONE	FRICTION
B	NONE	NONE	TYPE B
C	NONE	NONE	TYPE C
D	NONE	NONE	TYPE D

VOLTAGE RATING OPTION
BLANK=NONE
V= *250 VAC* ON HOUSING

MAT'L. OPTION
BLANK=NYLON 6/6, 94V-2.

MOLDED VOID CODE
Z=NO VOIDS
A=CKT. 1 VOID,
B=CKT. 2 VOID, ETC.
51=1ST MULTIPLE VOID,
52=2ND MULTIPLE VOID, ETC.

NO. OF CKT'S.

4	G4	DELETE DYED PARTS
3	H	UCP2003-5590
2	F	BY 67-0331 SCHAFER
1	H	G4 DEL UNTOOLED
		UCP2003-0794
		11/12/2005 SAMIEC

MFG. SH. REV. LTR. REVISIONS

DIMENSIONS SHOWN METRIC INCH

SCALE: 1" = 100.00MM

TITLE: HOUSING, FOR TRIFURCON TERM., (3.96)/.156

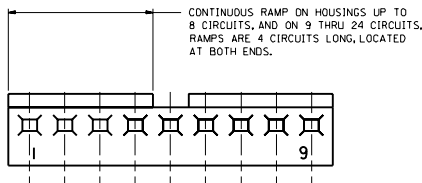
6442 SERIES DWG.

MOLEX INCORPORATED

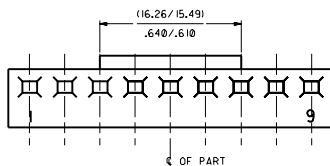
DATE: 12/3/86

SHEET NO. 1 OF 4

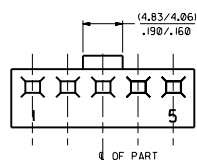
SEE CHART SD-6442



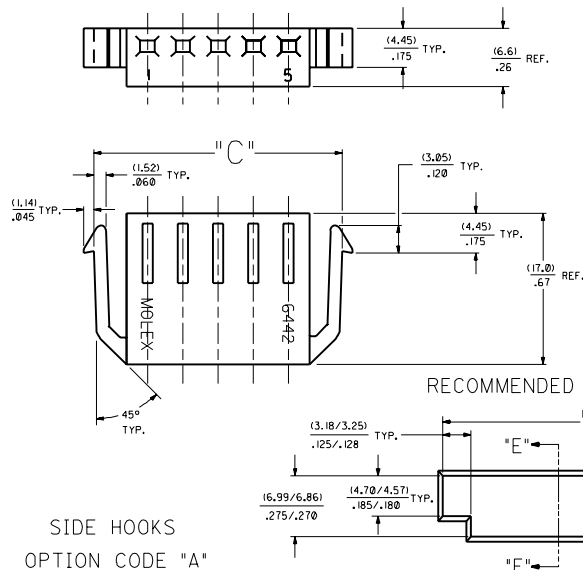
STD. RAMP OPTION CODE "R"



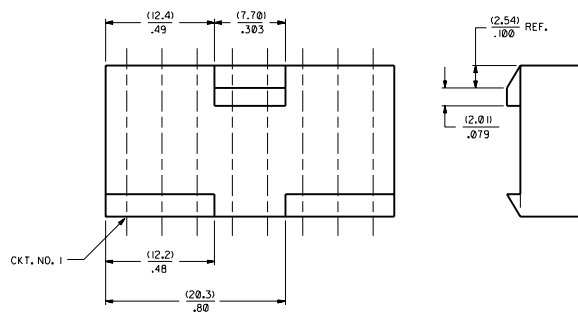
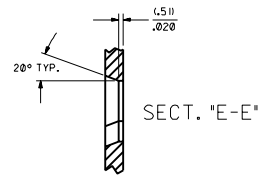
SELECTIVE RAMP
OPTION CODE "C"



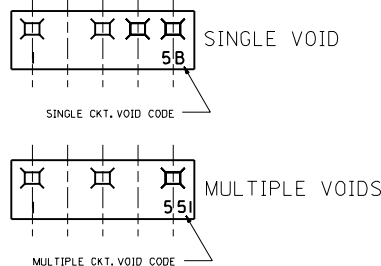
SELECTIVE RAMP
OPTION CODE "B"



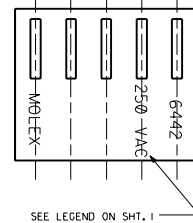
SIDE HOOKS
OPTION CODE "A"



SELECTIVE RAMP OPTION CODE "D"
INTERNATIONAL PART ONLY
(8 CKT. PART ONLY)



MOLDED VOIDS
SEE LEGEND ON SHT. I
SEE CHART FOR VOID CKT. LOCATIONS



OPT. VOLTAGE RATING

NO. OF CKT S.	DIM. "C"	DIM. "D"
2	(16.48 / 15.60)	(15.47 / 15.34)
3	(16.49 / 15.61)	(15.48 / 15.35)
4	(16.50 / 15.62)	(15.49 / 15.36)
5	(16.51 / 15.63)	(15.50 / 15.37)

SEE SHEET I	SEE SHEET I	CONVERSION SHOWN METRIC INCH	REVISE ONLY ON CAD SYSTEM
SEE SHEET I	SEE SHEET I	1 INCH = 25.4 MM	FILE
SEE SHEET I	SEE SHEET I	1 INCH = 25.4 MM	TITLE
SEE SHEET I	SEE SHEET I	1 INCH = 25.4 MM	HOUSING, FOR TRIFURCON TERM.,
SEE SHEET I	SEE SHEET I	1 INCH = 25.4 MM	(3.96) / .156 IN
SEE SHEET I	SEE SHEET I	1 INCH = 25.4 MM	6442 SERIES DWG.
SEE SHEET I	SEE SHEET I	1 INCH = 25.4 MM	SHEET NO.
SEE SHEET I	SEE SHEET I	1 INCH = 25.4 MM	2
SEE SHEET I	SEE SHEET I	1 INCH = 25.4 MM	DATE
SEE SHEET I	SEE SHEET I	1 INCH = 25.4 MM	12 / 5 / 86
SEE SHEET I	SEE SHEET I	1 INCH = 25.4 MM	MOLEX INCORPORATED
SEE SHEET I	SEE SHEET I	1 INCH = 25.4 MM	1200 N. WILSON AVENUE
SEE SHEET I	SEE SHEET I	1 INCH = 25.4 MM	IRVING, TEXAS 75039
SEE SHEET I	SEE SHEET I	1 INCH = 25.4 MM	SEE CHART
SEE SHEET I	SEE SHEET I	1 INCH = 25.4 MM	SD-6442
SEE SHEET I	SEE SHEET I	1 INCH = 25.4 MM	THIS DRAWING IS THE PROPERTY OF MOLEX INC. IT IS TO BE USED ONLY FOR THE PURPOSES SPECIFIED HEREON.
SEE SHEET I	SEE SHEET I	1 INCH = 25.4 MM	DATE
SEE SHEET I	SEE SHEET I	1 INCH = 25.4 MM	12 / 5 / 86
SEE SHEET I	SEE SHEET I	1 INCH = 25.4 MM	DATE
SEE SHEET I	SEE SHEET I	1 INCH = 25.4 MM	12 / 5 / 86

